



SciCan  
**STATIM® G4**  
Cassette Autoclaves






# LEADERSHIP

## in Infection Control

Sterilisation is usually the last step of reprocessing, following cleaning, disinfection and maintenance. For critical-use instruments, where sterility is mandatory, this essential step requires both proper use by office staff and reliable performance from the autoclave.

For over 25 years, STAT/M's efficiency, short cycle times, dependability, and reliability have made it one of the world's best-selling cassette autoclaves. Utilizing an innovative sterilisation process (Positive Pressure Pulse Displacement – PPPD) and the DriTec drying technology, STAT/M ensures clinicians always have an ample supply of instruments ready for use. In addition, STAT/M meets all applicable EU-standards and RKI requirements.



Originally founded in 1957, SciCan develops and manufactures highly innovative infection control products that address the need for speed, flexibility, and efficiency in today's environments.

In 1989, SciCan developed and produced an internationally recognized infection control innovation, the STAT/M Cassette Autoclave. Over the next quarter century, SciCan continued to be at the forefront of technology with the release of the HYDR/M® Instrument Washer-Disinfectors, BRAVO™ Chamber Autoclaves, and G4 Networking Technology.

SciCan is a global leader in infection control specializing in dentistry and ophthalmology in more than 100 countries around the world. The portfolio of products continues to grow to address market needs; with innovations such as the STATMATIC™ Smart, our handpiece cleaning and maintenance unit, and the OPT/M® 1 Cleaner and Disinfectant.

In 2007, SciCan opened the European headquarters, located in Germany. Our team consists of highly motivated and technically informed individuals whose network of authorities, infection control specialists and other manufacturers allow us to provide legally compliant and evidence-based information. We work closely with specialists in the dental and medical field, enabling us to provide practical guidance and help drive product improvements that will benefit our customers.

It is very important to me and my team, especially in the time of online sales, to offer you not only the best products but also a service that makes our customers feel well advised and cared for. Please don't hesitate to contact our office for any infection control related questions.

All the best,

**Stefan Helsing (Managing Director)**

# STATIM G4

## Cassette Autoclaves



### G4 Technology

Allows for reliable load release, documentation and data storage; connects and sends cycle data to your smart devices or computer, providing easily accessible cycle data, and maintenance information. Should you wish, G4 technology can connect your STATIM to specialized technicians, which allows for remote support.



### Capacity

Despite their compact dimensions, STATIM autoclaves offer enough capacity to meet the needs of a busy practice; the STATIM 2000S capacity allows for up to 4 pouches, or a 1.0kg load, and the STATIM 5000S allows for up to 10 pouches or a 1.5kg load.



### Compliant

EN 13060 compliant & offers reproducible sterilisation results that can be validated. Sterilisation efficacy proven by an independent research institute.



### Gentle

The fresh water feature guarantees fresh water with every cycle. State-of-the-art steam technology is gentle on both solid and hollow instruments.



### Flexible Design

Two sizes of STATIM units and a number of wrapped and unwrapped cycle options make the STATIM autoclaves ideal as a standalone unit or as a compliment to a chamber autoclave.



# Standards

The European Standard for small steam sterilisers (EN 13060) classifies three types of sterilisation cycles: B, S and N.

Type of Cycle	Description of approved use by EN 13060
<b>S</b>	The sterilisation of products as specified by the manufacturer of the steriliser including non-wrapped solid products and at least one of the following: porous products, small porous items, lumen devices, bowls & receivers, single-layer wrapped products, multiple-layer wrapped products
<b>N</b>	The sterilisation of non-wrapped solid products
<b>B</b>	The sterilisation of all wrapped (single and multiple layer) or non-wrapped, solid, lumen devices and porous products as represented by the test loads in this standard

For S-autoclaves like the STAT/M, the sterilisable product categories are specified by the manufacturer. The STAT/M autoclaves are tested by independent research institutes for specific instruments, including wrapped and unwrapped hollow and solid instruments. The testing results indicate that various semi-critical and critical instruments can be safely sterilised in the STAT/M.

Tested Handpieces			
<b>SycoTec</b>	STATIS High Speeds	<b>Bien-Air</b>	Bora L
<b>SycoTec</b>	STATIS Low Speeds	<b>Midwest</b>	Tradition
<b>SycoTec</b>	SANAO 200L	<b>Sirona</b>	T1 Classic, S 40 L
<b>SycoTec</b>	SANAO PSO	<b>Sirona</b>	T1 Control, TC3
<b>KaVo</b>	Gentle Power 25 LPA	<b>STAR</b>	430 SWL
<b>KaVo</b>	Gentleforce 7000C	<b>W&amp;H</b>	TA-98LC*
<b>KaVo</b>	Intramatic LUX3, 20 LH	<b>W&amp;H</b>	Trend HS, TC-95RM
<b>KaVo</b>	Super-Torque LUX/640 B	<b>W&amp;H</b>	Trend LS, WD-56
<b>NSK</b>	ATL118040	<b>W&amp;H</b>	WA-99 LT*
<b>NSK</b>	PanaAir	<b>W&amp;H</b>	WS-75*
<b>NSK</b>	Ti-Max		

The above mentioned instruments have been tested by independent parties. These tests show that semi-critical and critical, wrapped or unwrapped instruments can be safely sterilised in the STAT/M autoclave.

\* Wrapped cycle

A specially designed Process Challenge Device is available to demonstrate that the sterilisation parameters required have been achieved. It can be used for the daily routine check and/or as additional cycle documentation. In addition, STAT/M also documents its own successful cycle. A computerized microprocessor aborts the cycle if any of the monitored parameters of temperature, pressure, or time are not achieved.



# Conformity

STAT/M 2000/5000 G4 are produced in conformity with the following directives and standards:

<b>93/42/EEC</b>	Medical device class IIa (European directive for medical devices)	<b>EN ISO 13485:2016</b>	Medical devices – Quality management systems – requirements for regulatory purposes
<b>EN 13060: 2014 + A1:2018</b>	Small steam sterilisers	<b>EN ISO 14971:2012</b>	Application of risk management to medical devices
<b>EN 61010-1:2010</b>	Safety requirements for electrical equipment for measurement, control and laboratory use- part 1: general requirements	<b>EN ISO 62304:2006</b>	Software medical products
<b>EN 61010-2-040:2015</b>	Safety requirements for electrical equipment for measurement, control and laboratory use	<b>EN ISO 15223:2016</b>	Labelling of medical products
<b>EN 61326-1:2013</b>	Electrical equipment for measurement, control and laboratory use – EMC requirements – Part 1		

# Gentle Sterilisation and Short Cycle Times - Possible with STAT/M

Unlike conventional autoclaves which heat up an entire reservoir of water, STAT/M uses only a small, specific amount of water required for each cycle, which makes the STAT/M an efficient, time- and cost-saving device.

The thin stainless steel walls of STAT/M's fully removable cassette (sterilisation chamber) allow for rapid heating and cooling of the chamber. This helps STAT/M to provide the short cycle and drying times.

With the DriTec drying technology, the STAT/M units use the heat that remains in the cassette after the sterilisation process to rapidly dry instruments. The heat emitted into the cassette, and drying plates when using the STAT/M 5000, allows for quick drying of wrapped instruments.

The state-of-the-art steam technology is gentle on both solid and hollow instruments. Using fresh water with every cycle helps reduce the build-up of oils and debris.

## Compare the Results

The STAT/M 2000 G4 and 5000 G4 cassette autoclaves deliver dramatic improvements in process efficiency through shorter cycle times.

Button	Cycle	Load (max.)	Sterilisation Temperature	Sterilisation Time (Minutes)	Cycle Time* (mm:ss)	
					Warm Start (max. load)	Cold Start (max. load)
	<b>Solid Unwrapped (N)</b>	2000: 1,0 kg 5000: 1,5 kg	134 °C	3,5 Min.	2000: 6:45 5000: 8:45	2000: 9:15 5000: 13:15
	<b>Solid Unwrapped (N)<sup>†</sup></b>		134 °C	5 Min.	2000: 8:15 5000:10:15	2000: 10:45 5000: 14:45
	<b>Hollow Unwrapped (S)</b>		134 °C	3,5 Min.	2000: 8:05 5000:10:50	2000: 11:45 5000: 17:30
	<b>Hollow Unwrapped (S)<sup>†</sup></b>		134 °C	5 Min.	2000: 9:35 5000:12:20	2000: 13:15 5000: 19:00
	<b>Hollow Unwrapped (S)</b>		134 °C	18 Min.	2000: 22:35 5000: 25:20	2000: 26:15 5000: 32:00
	<b>Hollow Wrapped (S)**</b>	0,4 kg	134 °C	3,5 Min.	2000: 10:40 5000: 15:30	2000: 15:35 5000: 24:00
	<b>Hollow Wrapped (S)<sup>†</sup></b>		134 °C	5 Min.	2000: 12:10 5000: 17:00	2000: 17:05 5000: 25:30
	<b>Hollow Wrapped (S)</b>		134 °C	18 Min.	2000: 25:10 5000: 30:00	2000: 30:05 5000: 38:30
	<b>Rubber/Plastic (S)</b>	0,4 kg	121 °C	15 Min.	2000: 18:40 5000: 20:20	2000: 20:15 5000: 22:50
	<b>Rubber/Plastic (S)</b>		121 °C	30 Min.	2000: 33:40 5000: 35:20	2000: 35:15 5000: 37:50
	<b>Air Drying Only</b>				<b>Not a Sterilisation Cycle</b>	

\*Drying not included

\*\*Cycle for routine check (STAT/M PCD) test

<sup>†</sup>Cycle only available in Germany

# G4 Technology

A special feature of the STAT/M units is the innovative G4 technology. A large touch screen provides in-depth cycle information and allows users to view current operations.

With an integrated Ethernet port, STAT/M units can connect to the office network and send cycle data to your smart devices or computer, providing easily accessible cycle data, and maintenance information. To help optimize office processes, the STAT/Ms can be configured to email cycle information or error messages directly to office staff or service technicians.

Cycle data is automatically saved internally, on a USB, and can also be emailed or printed with a network printer. This is a unique feature to STAT/M that has been specifically designed for meeting the growing legal demand of physical filing of cycle data. The STAT/M G4 units have a traceability feature that requires a user code when releasing a load.





# STATIM 2000 – Rack Configurations



**Loading Sample 1 - Unwrapped**

Instruments	Manufacturer	Type
5 Handpieces	SycoTec	STATIS 1.1 ST STATIS 1.1 L STATIS 1.1 STATIS 1.5 L STATIS ML

Weight of load [Kg]: 0,420



**Loading Sample 2 - Unwrapped**

Instruments	Manufacturer
1 Mirror	THOMPSON
1 Forceps	THOMPSON
1 Cannula	Ash Temple Limited
2 Scalers	HU-FRIEDY
1 Scaler	GRACEY
2 Spatulas	GC - American
2 Tweezers	Miltex

Weight of load [Kg]: 0,177



**Loading Sample 3 - Unwrapped**

Instruments	Manufacturer
6 Scalers	GRACEY
7 Scalers	HU-FRIEDY
1 Scaler	LM Dental

Weight of load [Kg]: 0,272



**Loading Sample 4 - Wrapped**

Two sets of instruments (14 instruments) wrapped

# STATIM 5000 – Rack Configurations



## Loading Sample 1 - Unwrapped

Instruments	Manufacturer	Type
2 Handpieces	Sirona	STATIS 1.1 ST STATIS ML STATIS 1.1 STATIS 1.1 L
1 Handpiece	NSK	
4 Handpieces	SycoTec	

Weight of load [Kg]: 0,560



## Loading Sample 2 - Unwrapped

Instruments	Manufacturer
2 Mirrors	THOMPSON
3 Scalers	GRACEY
5 Scalers	HU-FRIEDY
1 Spatula	LM Dental
2 Spatulas	GC - America

Weight of load [Kg]: 0,170



## Loading Sample 3 - Wrapped

Instruments	Manufacturer
4 Scalers	GRACEY
2 Scalers	HU-FRIEDY
2 Pliers	Orthopli Corp.
1 Forceps	
1 Tweezers	Miltex

Weight of load [Kg]: 0,320



## Loading Sample 4 - Wrapped

Instruments	Manufacturer
6 Scalers	GRACEY
1 Scaler	LM Dental
7 Scalers	HU-FRIEDY
2 Pliers	Orthopli Corp.
2 Forceps	
3 Tweezers	Miltex

Weight of load [Kg]: 0,570

More loading samples available upon request.

# Specifications

Specifications	STAT/M 2000 G4	STAT/M 5000 G4	
<b>Machine Dimensions:</b>	<b>Length:</b>	49.5 cm	60 cm
	<b>Width:</b>	41.5 cm	41 cm
	<b>Height:</b>	15 cm	19 cm
<b>Cassette Size (External):</b>	<b>Length:</b>	41 cm	49.5 cm
	<b>Width:</b>	19.5 cm	19.5 cm
	<b>Height:</b>	4 cm	8 cm
<b>Cassette Size (Internal):</b>	<b>Length:</b>	28 cm	38 cm
	<b>Width:</b>	18 cm	18 cm
	<b>Height:</b>	3.5 cm	7.5 cm
<b>Sterilisation Chamber Volume:</b>	1.8 L	5.1 L	
<b>Reservoir Volume:</b>	4.0 L	4.0 L	
<b>Weight (Without Water):</b>	22 Kg	34 Kg	
<b>Clearance Required:</b>	<b>Top:</b>	50 mm	50 mm
	<b>Sides:</b>	50 mm	50 mm
	<b>Back:</b>	50 mm	50 mm
<b>Clearance Required To Remove Cassette:</b>	48 cm	57 cm	
<b>Minimum Charge In The Water Reservoir:</b>	550 ml	550 ml	
<b>PRV Value (Pressure Relief Valve):</b>	3 BAR	3 BAR	
<b>Electrical Rating:</b>	220-240 V, 50/60Hz, 6A	220-240 V, 50/60 Hz, 6A	
<b>Current:</b>	AC	AC	
<b>Protection Class:</b>	I	I	
<b>Protection:</b>	Covered	Covered	
<b>Ambient Operating Temperature:</b>	5°C - 40°C	5°C - 40°C	
<b>Sound Levels:</b>	Mean - 56 dB	Mean - 56 dB	
	Peak - 65 dB	Peak - 65 dB	
<b>Relative Humidity:</b>	80% Max.	80% Max.	
<b>Max. Altitude:</b>	0 - 2000 m	0 - 2000 m	
<b>Max. Water Consumption:</b>	268 mL/cycle	564 mL/cycle	
<b>Recommended Water Quality:</b>	<5 ppm	<5 ppm	
<b>Conductivity:</b>	<10 µs	<10 µs	
<b>Total Heat Transmitted:</b>	1,047,000 Joules max	1,645,000 Joules max	
<b>Weight Load With Reservoir Full And Maximum Cassette Load:</b>	30,571 N/m <sup>2</sup>	51,291 N/m <sup>2</sup>	

# Accessories, Spare Parts and Consumables

## STATIM 2000 G4

01-111770	SciCan Data Logger
01-112406S	Standard Cassette (2000S)
01-100028S	Standard Cassette Seal (2000S)
01-112409S	Standard Cassette Lid (2000S)
01-112407S	Cassette Tray (2000S) with Mesh Rack
88-100270D	Plastic Transport Tray for STATIM 2000 Cassette Tray
01-107240	Basket (2000S)
01-100207S	Compressor Filter (2000S)
01-102119S	Microbiological Filter (2000S)
01-108262S	Medical Basket with Handles
PSM-300	Paper for Ext. Printer Star Micro SP212FD42



## STATIM 5000 G4

01-111770	SciCan Data Logger
01-112384S	Standard Cassette Complete (5000S)
01-112509S	Extended Cassette Complete (5000S)
01-106325	Container for Endo Cassette (5000S)
01-101649S	Standard Cassette Seal (5000S)
01-112386S	Standard Cassette Lid (5000S)
01-112385S	Cassette Tray (5000S) with Mesh Rack
01-101652S	Compressor Filter (5000S)
01-102119S	Microbiological Filter (5000S)
01-107241	Basket (5000S)
01-108263S	Medical Basket with Handles
01-104499	Extended Length Cassette Instrument Rack
01-101657S	Thermal Paper (Carton with 10 Rolls)



## Silicone Mat

Keep your STATIM looking new with the StatMat Silicone Mat. The high quality silicone protects the STATIM from accidental scuffs and scrapes when the cassette is placed on top of the unit, while helping to dissipate heat and protect surfaces from damage caused by heat transfer from hot metal surfaces. The mat is available in two different sizes, suitable for the STATIM 2000 or STATIM 5000.



# SYS-TM Cassettes

The sturdy SYS-TM instrument cassettes made of surgical steel protect delicate instruments and enable safe and efficient transport and reprocessing. The cassettes can be used in a washer-disinfector as well as in an autoclave. With the different sizes of the SYS-TM instrument cassettes, the respective unit capacities can be ideally used. With the silicone holding straps the instruments are, despite minimal contact areas, held safely in place in the cassette. For a better allocation, silicone strips in different colours are available on request.



## Sys-TM 1

Examination Size Cassette (7 Instruments)  
(64 x 178 x 13 mm)



## Sys-TM 2

Handpiece/Surgical Size Cassette  
(64 x 178 x 25 mm)



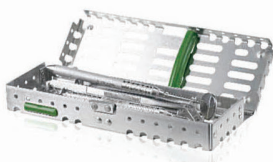
## Sys-TM 3

Hygiene Size Cassette (10 Instruments)  
(114 x 178 x 13 mm)



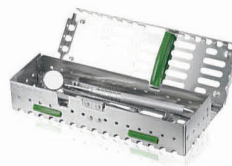
## Sys-TM 4B

Operative Cassette (14 Instruments)  
(267 x 165 x 25 mm)



## Sys-TM-8x2.75

Quarter-size Cassette (203 x 69 x 25 mm) for 5 Instruments



## Sys-TM-8x2.75DS

Quarter-size Cassette; Double-stack (203 x 69 x 38 mm) for 10 Instruments



## Sys-TM-8x5.5

Half-size Cassette (203 x 140 x 25 mm) for 10 Instruments



## Sys-TM-8x5.5DS

(203 x 140 x 38 mm) for 20 Instruments



## Sys-TM-8x11

Full-size Cassette (203 x 280 x 25 mm) for 20 Instruments



## Sys-TM-8x11A

Full-size Cassette (203 x 280 x 25 mm) for 14 Instruments and Accessories

# SciCan's Full Spectrum Solutions

Helping you get the most out of your sterilisation area and the equipment you put in it.





Manufactured by:  
**SciCan Ltd.**  
1440 Don Mills Rd.,  
Toronto, ON, Canada, M3B 3P9  
Tel: 416-445-1600  
Toll free: 1-800-667-7733  
customerservice@scican.com



EU Representative & Distributed by:  
**SciCan GmbH**  
Wangener Strasse 78  
88299 Leutkirch, Deutschland  
Tel: +49 (0)7561 98343 - 0  
Fax: +49 (0)7561 98343 - 699  
customerservice\_eu@scican.com

Office for Swiss Customers:  
**SciCan Medtech AG**  
Alpenstrasse 14  
6300 Zug, Switzerland  
Tel: +41 (0) 41-727 7027  
Fax: +41 (0) 41-727 7029  
switzerland@scican.com

† Manufactured by:  
**SycoTec GmbH & Co.KG**  
Wangener Strasse 78,  
88299 Leutkirch, Deutschland  
Tel: +49 7561 86-0  
info@sycotec.eu

STATIM, HYDRIM, and OPTIM are registered trademarks and HYDROS, BRAVO, STATMATIC, and SciCan SPEC are trademarks of SciCan Ltd.

www.scican.com  
 **COLTENE**

SD-545 EU EN R2